

Selborne Road Ilford, IG1 3AJ

Edward Chase is delighted to present to the residential lettings market this amazing Duplex 3 Bedroom flat located on Selborne Road, IG1. This property spans over 3 floors and includes parking and a private garden. 3 Double bedrooms and a furnished apartment makes this an ideal choice for applicants searching for size, comfort, and location. This property has several key features such as: - 3 double bedrooms - Duplex flat - Fully furnished - Gas central heating - Double glazed windows - Private garden - Driveway parking - Ilford station doorstep - Tiled bathroom - Large kitchen with ample storage - Loft reception room - White goods included - Basement storage For further information please contact Edward Chase. How to view this property: Please complete the online enquiry form by selecting 'email agent'. Once your full name, email and contact number is submitted to Edward Chase we shall register your interest. When our lettings team

- Large 3 Double Bedroom Flat Located Behind Ilford Station
- Duplex Flat Covering Ground, First and Second Floor
- Spacious throughout and Has The Benefit of A Private Garden & Parking
- Fully Furnished with Ample Storage
- Bespoke Kitchen Including White Goods & Tiled Bathroom
- Gas Central Heating, Combination Boiler, Double Glazed Windows

Monthly Rental Of £2,099

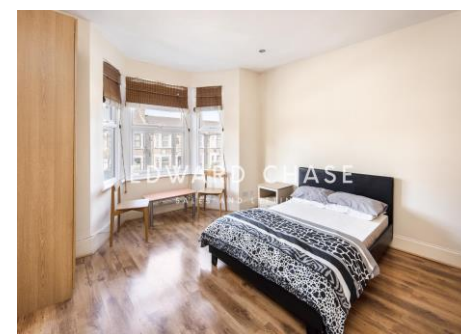
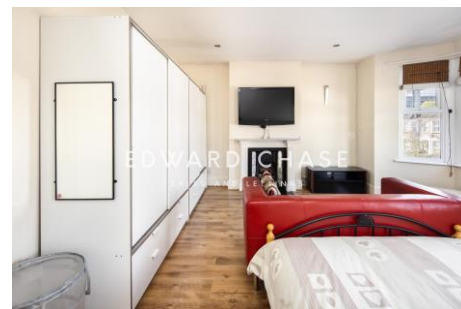
Selborne Road

Ilford, IG1 3AJ

Monthly Rental Of £2,099

Edward Chase is delighted to present to the residential lettings market this amazing Duplex 3 Bedroom flat located on Selborne Road, IG1. This property spans over 3 floors and includes parking and a private garden. 3 Double bedrooms and a furnished apartment makes this an ideal choice for applicants searching for size, comfort, and location. This property has several key features such as: - 3 double bedrooms - Duplex flat - Fully furnished - Gas central heating - Double glazed windows - Private garden - Driveway parking - Ilford station doorstep - Tiled bathroom - Large kitchen with ample storage - Loft reception room - White goods included - Basement storage For further information please contact Edward Chase. How to view this property: Please complete the online enquiry form by selecting 'email agent'. Once your full name, email and contact number is submitted to Edward Chase we shall register your interest. When our lettings team have finalised a viewing date and time, they shall email you notification of the

viewing schedule and will offer you the opportunity to confirm the viewing. Lettings Edward Chase estate agents offer a bespoke, professional, ARLA accredited Lettings & Management service. If you would like a free property appraisal to gauge the rental potential of your property or you are considering a buy to let purchase, please feel free to contact Sukhbir Basra, Branch Manager to arrange an appointment. Edward Chase estate agents specialise in Ilford, Redbridge, Seven Kings, Goodmayes, Chadwell Heath, Newbury Park, Barkingside, Chadwell Heath, Barking, Canary Wharf, Docklands, Romford, Chigwell, Dagenham, Newham, Royal Wharf and the surrounding East London vicinity. Edward chase estates agents Lorimer Village, Goodmayes site. Our enthusiastic team of estate agents in Ilford are the local experts covering the postcodes of IG1, IG2, IG3, IG4, IG5, IG6, IG7 IG8.



Score	Energy rating	Current	Potential
92+	A		
81-91	B		
69-80	C		
55-68	D	63 D	66 D
39-54	E		
21-38	F		
1-20	G		

MONEY LAUNDERING REGULATIONS 2003

Intending purchasers will be asked to produce identification and proof of financial status when an offer is received. We would ask for your co-operation in order that there will be no delay in agreeing the sale.